

# Stainless Steel Washbasins

## SLUN 17, SLUN 17H, SLUN 21



### Characteristics:

- stainless steel wall hung washbasin
- without a tap hole (could be made to order)
- material CrNi 18/10 (AISI-304), thickness 1 mm
- brushed finish

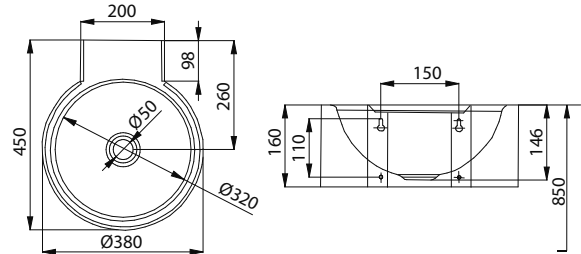


SLUN 17

### Supply Specification:

**SLUN 17 – supply No. 93170** stainless steel washbasin; siphon; mounting set

### Dimensions:



### Characteristics:

- stainless steel corner wall hung washbasin
- without a tap hole (could be made to order)
- material CrNi 18/10 (AISI-304), thickness 1,2 mm
- brushed finish

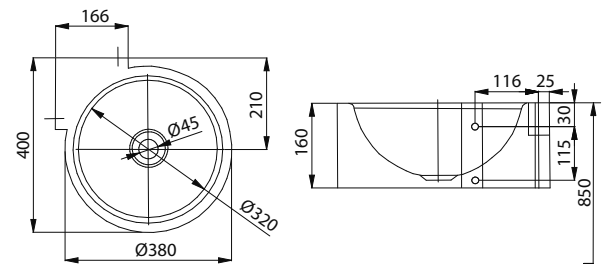


SLUN 17H

### Supply Specification:

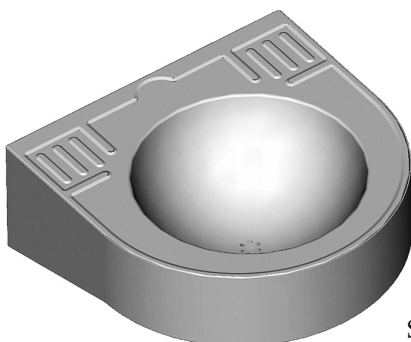
**SLUN 17H – supply No. 73171** stainless steel corner washbasin; siphon; mounting set

### Dimensions:



### Characteristics:

- stainless steel wall hung washbasin
- without a tap hole (could be made to order)
- two integrated soap holders
- material CrNi 18/10 (AISI-304), thickness 1 mm
- brushed finish



SLUN 21

### Supply Specification:

**SLUN 21 – supply No. 93210** stainless steel washbasin; siphon; mounting set

### Dimensions:

