

# Stainless Steel Bulk Sinks SLUN 15, SLUN 16, Working and Washing Tables



## Characteristics:

- stainless steel bulk sink with supporting legs with a sheating
- without a tap hole (could be made to order)
- possibility of fine plane regulation by the regulation screws on the supporting legs
- available also in dimensions 600 x 600 x 850 mm
- material CrNi 18/10 (AISI-304)
- brushed finish

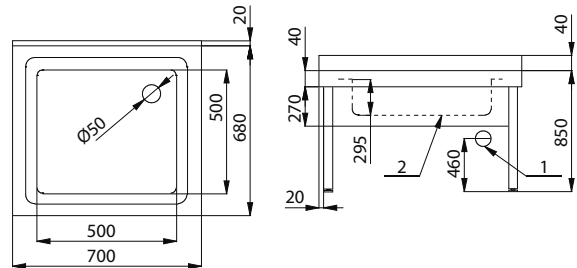


SLUN 15

## Supply Specification:

**SLUN 15 – supply No. 93150** stainless steel floor standing bulk sink; siphon

## Dimensions:



1 - waste outlet Ø 50 mm  
2 - sheating

## Characteristics:

- stainless steel bulk double-sink with a sheating
- without a tap hole (could be made to order)
- possibility of fine plane regulation by the regulation screws on the supporting legs
- possibility to order inner sinks in dimensions: 400 x 300 x 200 mm/ 400 x 400 x 250 mm/ 400 x 400 x 200 mm
- available also in the length 1400 mm
- material CrNi 18/10 (AISI-304)
- brushed finish

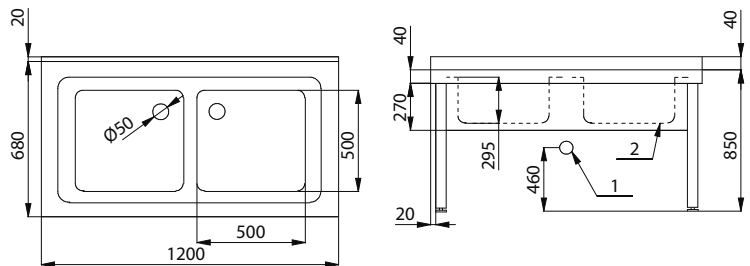


SLUN 16

## Supply Specification:

**SLUN 16 – supply No. 93160** stainless steel floor standing double bulk sink; siphon,

## Dimensions:



1 - waste outlet Ø 50 mm  
2 - sheating

## Characteristics:

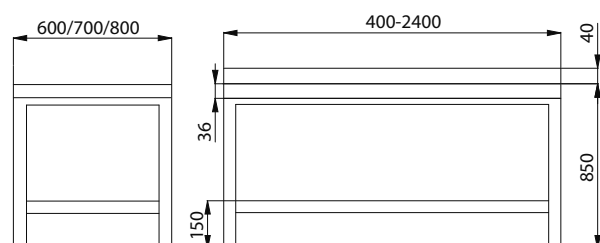
- stainless steel working and washing tables
- possibility of back or side sheating
- possibility of grating or solid shelf 150 mm up from the floor
- possibility of drawer, inner dimensions 368 x 470 x 130 mm
- possibility of sink, dimensions standardly 300 x 500 x 300 mm
- material CrNi 18/10 (AISI-304)



## Supply Specification:

**Order list for exact stainless steel table specification is available on „www.sanela.eu“: Product Catalogue > Stainless Steel Products > Working and Washing Tables**

## Dimensions:



Stainless Steel Bulk Sinks, Tables