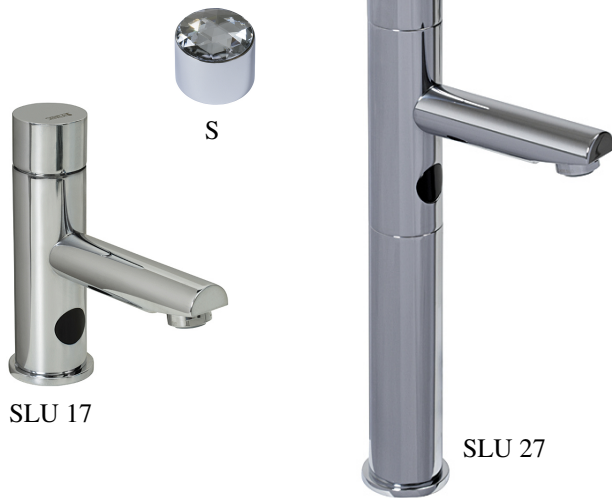


Automatic Washbasin Mixers

SLU 17, SLU 27

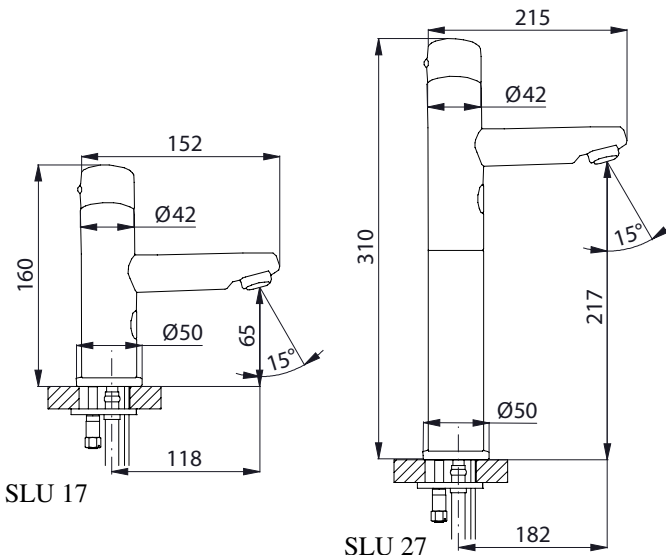


Characteristics:



- economical aerator, rate of flow 6 l/min
- function of automatic water stop after 5 minutes of continuous flow
- water is flowing as long as hands are in the active range (max. range to 0,3 m)
- water stops flowing after removal of hands from the active range of sensor after adjustable time delay
- time delay from 0,25 to 7,75 sec.
- possibility of changing of time delay, active range and switching off by SLD 03
- mixers are destined for cold and hot water, temperature is regulated by mixer
- monitoring of battery capacity (only for models with „B“ index)
- START/STOP program
- glass top of the mixer (only for models with „S“ index)
- different heights of tap could be made to order

Dimensions:



Technical Specification:

Operating voltage	
- SLU 17, 17S, 27, 27S	24V DC
- SLU 17B, 17SB, SLU 27B, 27SB	battery 6V
Power input	
- operating voltage 24V DC	13 W
- operating voltage 6V	11 W
Active range	
- standard	0,07 - 0,3 m
- START/STOP program	0,05 - 0,1m
Recommended flow pressure	0,1 - 0,6 MPa
Rate of flow	6 l/min. (inf. data)
Water inlet	male thread G ½"

Supply Specification:

SLU 17	- supply No. 03170	chromium-plated faucet with an integrated electronics; battery case (only for models with „B“ index); electromagnetic valve (2 pcs.); connecting hoses; angle valve with a filter and non-return valve (2 pcs.); battery alkaline 4 pcs. 1,5V, 2700 mAh
SLU 17B	- supply No. 03175	
SLU 17S	- supply No. 33178	
SLU 17SB	- supply No. 33179	(only for models with „B“ index)
SLU 27	- supply No. 03270	
SLU 27S	- supply No. 33278	
SLU 27B	- supply No. 03275	
SLU 27SB	- supply No. 33279	

Recommended Accessories:

SLZ 01Y	- supply No. 05012	external power supply 230/24V DC for operating of max. 1 pc. of washbasin tap
SLZ 01Z	- supply No. 05011	external power supply 230/24V DC for operating of max. 2 pcs. of washbasin taps
SLZ 03	- supply No. 05030	switched power supply 230/24V DC for operating of max. 4 pcs. of washbasin taps
SLZ 04Y	- supply No. 05041	external power supply 230/24V DC on DIN rail, for operating of max. 5 pcs. of washbasin taps
SLZ 04Z	- supply No. 05042	external power supply 230/24V DC on DIN rail, for operating of max. 9 pcs. of washbasin taps
SLZ 04X	- supply No. 10049	external power supply 230/24V DC on DIN rail, for operating of max. 15 pcs. of washbasin taps
SLD 03	- supply No. 07030	universal remote control for an adjustment of parameters of all products with infra-red electronics
SLA 36	- supply No. 06360	set of alkaline batteries, 4 pcs. of 1,5V AA 2700 mAh (only for models with „B“ index)