

**SANELA** <sup>®</sup>  
*we make water cool*<sup>®</sup>



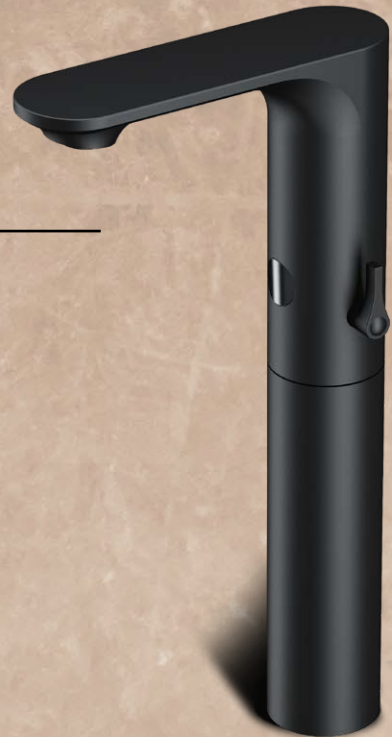
**B L A C K L I N E**



SANEELAT

**AUTOMATIC WASHBASIN MIXER  
FOR COUNTERTOP WASHBASINS**

**SLU 60V** | 03602 | 24 V DC  
**SLU 60VB** | 03607 | 6 V



**AUTOMATIC WASHBASIN MIXER**

**SLU 63V** | 03634 | 24 V DC  
**SLU 63VB** | 03637 | 6 V



**AUTOMATIC WASHBASIN  
TAP FOR COLD  
OR PREMIXED WATER**

**SLU 61V** | 03611 | 24 V DC  
**SLU 61VB** | 03616 | 6 V



**AUTOMATIC WASHBASIN  
TAP FOR COLD  
AND HOT WATER**

**SLU 62V** | 03621 | 24 V DC  
**SLU 62VB** | 03626 | 6 V



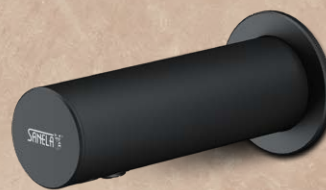
**AUTOMATIC WALL-MOUNTED  
STAINLESS STEEL WASHBASIN TAP**

**SLU 43V** | 03433 | 24 V DC  
**SLU 43VB** | 03434 | 6 V



**AUTOMATIC STAINLESS STEEL  
WALL HUNG SOAP DISPENSER**

**SLZN 83EV** | 85837 | 230 V AC



**STAINLESS STEEL WALL HUNG SQUARE WASHBASIN WITH TAP HOLE**

**SLUN 73V** | 73731 | 395 x 405 x 80 mm



**STAINLESS STEEL COUNTERTOP SQUARE WASHBASIN WITHOUT TAP HOLE**

**SLUN 73AV** | 73733 | 395 x 350 x 80 mm

**SHOWER CONTROL WITH MOUNTING  
BOX FOR COLD OR PREMIXED WATER**

**SLS 01AKV** | 02002 | 24 V DC  
**SLS 01AKVB** | 12007 | 6 V



**ELECTRONIC TOUCH SHOWER CONTROL  
FOR COLD OR PREMIXED WATER**

**SLS 30D** | 02302 | METALLIC BLACK | 24 V DC  
**SLS 30E** | 02303 | BLACK | 24 V DC



**ELECTRONIC TOUCH CONTROL FOR HEAD  
AND HAND SHOWER WITH THERMOSTATIC VALVE**

**SLS 32D** | 02322 | METALLIC BLACK | 24 V DC  
**SLS 32E** | 02323 | BLACK | 24 V DC





## AUTOMATIC URINAL FLUSHING UNIT

**SLP 02KV** | 01018 | 24 V DC  
**SLP 02KVZ** | 01019 | 230 V AC  
**SLP 06KV** | 01066 | 6 V



## AUTOMATIC TOILET FLUSHING UNIT

**SLW 02F** | 04027 | 24 V DC



## ELECTRONIC TOUCH TOILET FLUSHING UNIT

**SLW 30E** | 04301 | BACKLIGHTING WHITE | 24 V DC  
**SLW 30F** | 04302 | BACKLIGHTING BLUE | 24 V DC







### STAINLESS STEEL HANGER

SLZN 68N | 95681 | 45 x 16 x 16 mm



### STAINLESS STEEL HANGER WITH TWO HOOKS

SLZD 01N | 62011 | 55 x 55 x 54 mm



### STAINLESS STEEL HANGER

SLZD 02N | 62021 | 55 x 55 x 54 mm



### STAINLESS STEEL HANGER

SLZD 03N | 62031 | 55 x 55 x 60 mm



### STAINLESS STEEL HANGER WITH TWO HOOKS

SLZD 04N | 62041 | 82 x 55 x 55 mm



### STAINLESS STEEL TOWEL RING

SLZD 05N | 62051 | 194 x 170 x 54 mm



### STAINLESS STEEL TOWEL RING

SLZD 06N | 62061 | 182 x 170 x 54 mm



### STAINLESS STEEL TOWEL BAR

SLZD 07N | 62071 | 412 x 77 x 55 mm



### STAINLESS STEEL TOWEL BAR

SLZD 08N | 62081 | 500 x 77 x 55 mm



### STAINLESS STEEL DOUBLE TOWEL BAR

SLZD 10N | 62101 | 500 x 115 x 55 mm



### STAINLESS STEEL DOUBLE TOWEL BAR

SLZD 11N | 62111 | 600 x 115 x 55 mm



BLACKLINE



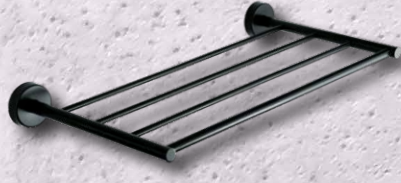
### STAINLESS STEEL TOWEL RACK

SLZD 34N | 62341 | 514 x 250 x 55 mm



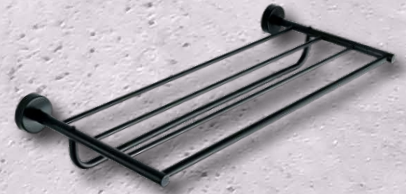
### STAINLESS STEEL TOWEL RACK

SLZD 35N | 62351 | 630 x 250 x 55 mm



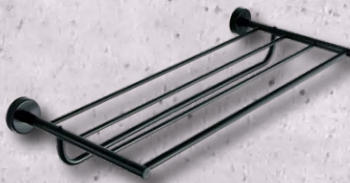
### STAINLESS STEEL TOWEL RACK WITH RAIL

SLZD 36N | 62361 | 514 x 250 x 92 mm



### STAINLESS STEEL TOWEL RACK WITH RAIL

SLZD 37N | 62371 | 630 x 250 x 92 mm



### STAINLESS STEEL SOAP HOLDER

SLZD 18N | 62181 | 147 x 138 x 55 mm



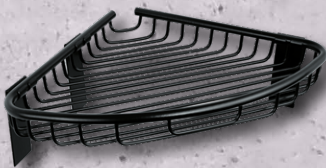
### STAINLESS STEEL SOAP HOLDER

SLZD 19N | 62191 | 230 x 147 x 55 mm



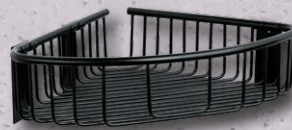
### STAINLESS STEEL CORNER SHELF

SLZD 25N | 62251 | 218 x 218 x 77 mm



### STAINLESS STEEL CORNER SHELF

SLZD 26N | 62261 | 218 x 218 x 77 mm



### STAINLESS STEEL CORNER DOUBLE SHELF

SLZD 28N | 62281 | 318 x 218 x 218 mm



### STAINLESS STEEL CORNER DOUBLE SHELF

SLZD 29N | 62291 | 283 x 218 x 218 mm





### STAINLESS STEEL GLASS HOLDER

SLZD 12N | 62121 | 119 x 68 x 97 mm



### STAINLESS STEEL GLASS SOAP HOLDER

SLZD 13N | 62131 | 141 x 112 x 55 mm



### STAINLESS STEEL GLASS SOAP HOLDER

SLZD 14N | 62141 | 160 x 127 x 71 mm



### STAINLESS STEEL DOUBLE GLASS HOLDER

SLZD 15N | 62151 | 206 x 100 x 98 mm



### STAINLESS STEEL HOLDER FOR GLASS AND SOAP

SLZD 17N | 62171 | 229 x 123 x 98 mm



### STAINLESS STEEL TOILET BRUSH WITH GLASS - WALL MOUNTED

SLZD 24N | 62241 | 750 x 160 x 116 mm



### STAINLESS STEEL TOILET ROLL HOLDER

SLZD 20N | 62201 | 142 x 79 x 55 mm



### STAINLESS STEEL DOUBLE TOILET ROLL HOLDER

SLZD 21N | 62211 | 229 x 79 x 55 mm



### STAINLESS STEEL TOILET ROLL HOLDER

SLZN 09N | 95091 | 140 x 120 x 55 mm



### STAINLESS STEEL TOILET ROLL HOLDER

SLZD 23N | 62231 | 139 x 77 x 55 mm



### STAINLESS STEEL TOILET BRUSH

SLZD 30N | 62301 | 400 x 89 x 89 mm  
| FOR FLOOR STANDING



### STAINLESS STEEL TOILET BRUSH

SLZD 31N | 62311 | 400 x 96 x 89 mm  
| MOUNTING ON THE WALL



BLACKLINE



**STAINLESS STEEL SUPPLY BIN  
FOR A FOLDER PAPER TOWELS**

SLZN 20V | 95202 | 340 x 110 x 265 mm



**STAINLESS STEEL HOLDER  
FOR A BIG COILS OF TOILET PAPER**

SLZN 37V | 95372



**PLASTIC SUPPLY BIN FOR A BIG  
COILS OF TOILET PAPER**

SLDN 01N | 72011



**PLASTIC SUPPLY BIN FOR COIL  
OF PAPER TOWELS**

SLDN 02N | 72021 | 260 x 230 x 300 mm



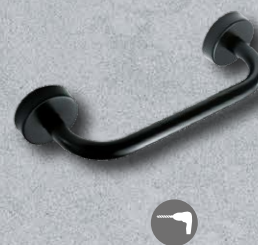
**PLASTIC SUPPLY BIN FOR A FOLDER  
PAPER TOWELS**

SLDN 03N | 72031 | 260 x 140 x 300 mm



**STAINLESS STEEL BATH HANDLE**

SLZD 33N | 62331 | 353 x 78 x 55 mm



**PLASTIC SOAP DISPENSER  
FOR FOAM SOAP**

SLDN 05N | 72051 | volume 1 l



**PLASTIC DISPENSER FOR LIQUID  
AND GEL DISINFECTION AND SOAP**

SLDN 06N | 72061 | volume 1 l



**PLASTIC DISPENSER FOR LIQUID  
DISINFECTION**

SLDN 07N | 72071 | volume 1 l, with spray spatter



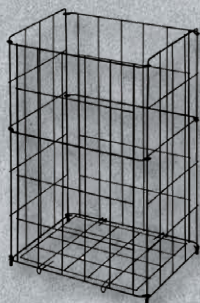
**ROUND WASTE BIN**

SLZN 96E | 85962 | 13 L  
SLZN 97E | 85972 | 21 L  
SLZN 98E | 85982 | 32 L



**STEEL WIRE FLOOR STANDING WASTE BIN**

SLZN 40V | 95401 | 360 x 290 x 180 mm | WALL  
SLZN 42V | 95421 | 540 x 340 x 260 mm | FLOOR



**STAINLESS STEEL WALL HUNG  
WASTE BIN**

SLZN 23V | 95231 | 360 x 160 x 435 mm



BLACKLINE



## IMPREGNATION 3M

SLA 59 | 06590 | SPECIAL IMPREGNATION TO INCREASE THE ADHESION OF 3M VHB TAPE

3M

### 3M VHB TAPE

| INSTALLATION WITHOUT DRILLING, USING 3M VHB (VERY HIGH BOND) DOUBLE-SIDED ADHESIVE TAPE FOR PERFECT FIXATION



3M

### IMPREGNATION 3M

| INSTALLATION WITHOUT DRILLING, USING 3M VHB (VERY HIGH BOND) DOUBLE-SIDED ADHESIVE TAPE FOR PERFECT FIXATION

| FOR PRODUCTS WITH HIGHER LOADS, THE USE OF A SPECIAL IMPREGNATION IS RECOMMENDED TO INCREASE THE ADHESION OF 3M VHB TAPE



### MOUNTING KIT

| INSTALLATION USING MOUNTING KIT

SANELA spol. s r.o. Dukelských hrdinů 989 • 563 01 Lanškroun  
tel.: +420 465 350 770 - 3 • e-mail: [sanela@sanela.cz](mailto:sanela@sanela.cz), [www.sanela.eu](http://www.sanela.eu) • [www.sanela.eu](http://www.sanela.eu)

CE  
EN ISO 9001:2015

