

# Stainless Steel Washbasins SLUN 32, SLUN 32X, SLUN 34, SLUN 44, SLUN 45



## Characteristics:

- stainless steel recessed oval washbasin for a surface mounting
- with a tap hole
- overflow set
- material CrNi 18/10 (AISI - 304)
- inner surface high polished (SLUN 32)
- inner surface brushed finish (SLUN 32X)

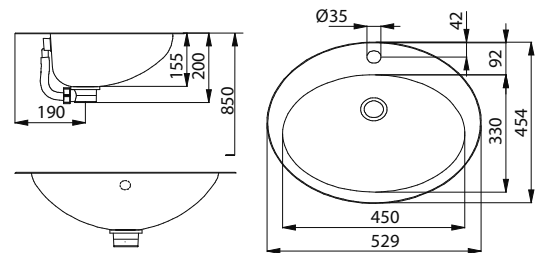
## Supply Specification:

**SLUN 32** – supply No. 93320 stainless steel washbasin;  
**SLUN 32X** – supply No. 93328 siphon

## Dimensions:



SLUN 32



## Characteristics:

- stainless steel recessed round washbasin for a surface mounting
- without a tap hole
- material CrNi 18/10 (AISI - 304)
- brushed finish

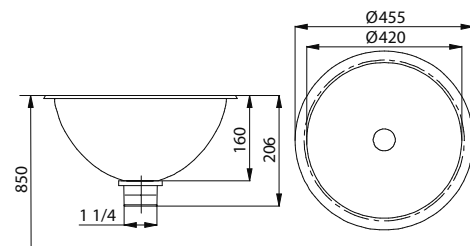
## Supply Specification:

**SLUN 34** – supply No. 93340 stainless steel washbasin;  
 siphon

## Dimensions:



SLUN 34



## Characteristics:

- stainless steel recessed round washbasin for a surface mounting
- without a tap hole
- overflow set
- material CrNi 18/10 (AISI - 304)
- inner Ø 320 mm (SLUN 44, SLUN 44X)
- inner Ø 360 mm (SLUN 45, SLUN 45X)
- polished finish (SLUN 44, SLUN 45)
- brushed finish (SLUN 44X, SLUN 45X)

## Supply Specification:

**SLUN 44** – supply No. 93440 stainless steel washbasin;  
**SLUN 44X** – supply No. 93448 overflow set;  
**SLUN 45** – supply No. 93450 siphon;  
**SLUN 45X** – supply No. 93458

## Dimensions:



SLUN 44, SLUN 45

