

Stainless Steel Washbasins

SLUN 28A, SLUN 63, SLUN 67



Characteristics:

- stainless steel recessed round washbasin for surface mounting
- with a tap hole
- overflow set
- material CrNi 18/10 (AISI - 304)
- polished finish

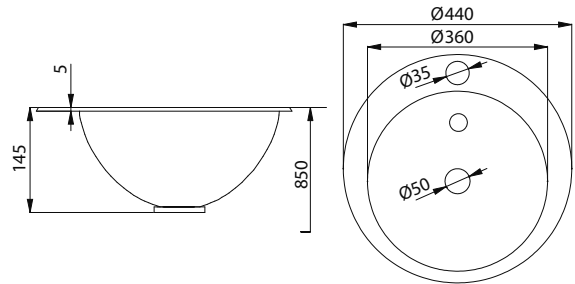


SLUN 28A

Supply Specification:

SLUN 28A – supply No. 73282 stainless steel washbain; overflow set; siphon; mounting set

Dimensions:



Characteristics:

- stainless steel oval washbasin for surface mounting
- without a tap hole
- overflow set
- material CrNi 18/10 (AISI - 304)
- polished finish

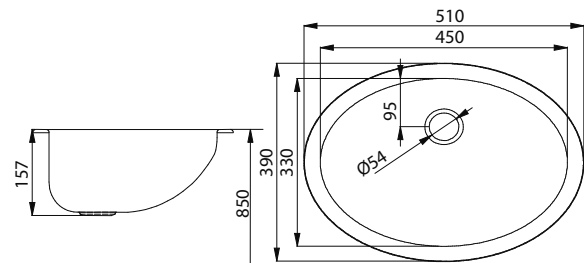


SLUN 63

Supply Specification:

SLUN 63 – supply No. 93630 stainless steel washbain; overflow set; siphon

Dimensions:



Characteristics:

NEW



- **vandal-proof**
- stainless steel wall hung conical washbasin
- without a tap hole (could be made to order)
- material CrNi 18/10 (AISI - 304)
- brushed finish

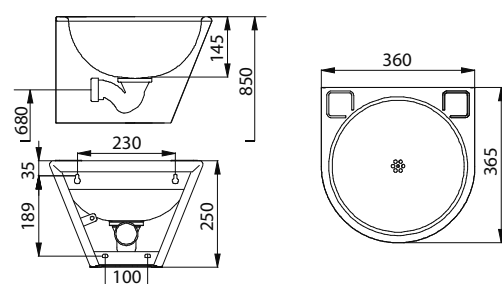


SLUN 67

Supply Specification:

SLUN 67 – supply No. 93670 stainless steel washbain; siphon; mounting set

Dimensions:



Stainless Steel Washbasins