

Stainless Steel Automatic Urinals

SLPN 07C, SLPN 08C



Characteristics: **NEW**



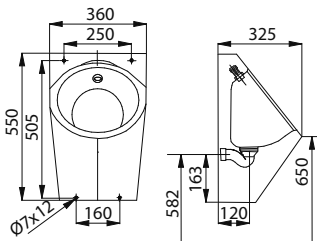
SLPN 07C



SLPN 08C

- **vandal-proof**
- stainless steel wall hung urinals
- SLPN 07C - assembling by service door in the bottom part of urinal
- material CrNi 18/10 (AISI - 304)
- brushed finish (SLPN 07C), polished finish (SLPN 08C)
- system reacts to the changes in use time inside of the urinal
- adjustable minimum use time (min. time of urinal direct using) from 6 to 15 sec.
- adjustable flushing time from 0,5 to 15,5 seconds
- automatic hygiene flushing after 24 hours non-use

Dimensions:



SLPN 07C

Technical Specification:

Operating voltage

- SLPN 07C, 08C
- SLPN 07CZ, 08CZ
- SLPN 07CB, 08CB

24V DC
230V AC/ 50Hz
6V

Recommended flow pressure

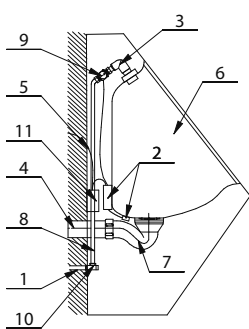
0,1 - 0,6 MPa

Rate of flow

12 l/min. (inf. data)

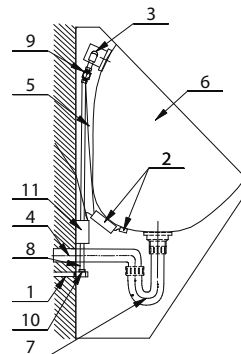
Water inlet

male thread G 1/2"

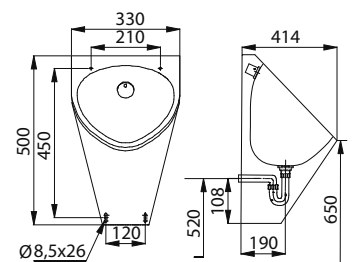


SLPN 07C

- 1 water supply
- 2 electronics with sensor
- 3 inlet fitting with rubber seal
- 4 waste pipeline \varnothing 40 mm
- 5 feed cable from the power supply
- 6 stainless steel urinal
- 7 siphon
- 8 connecting hose
- 9 electromagnetic valve
- 10 angle valve
- 11 battery box (SLPN xxCB) or power supply (SLPN xxCZ)



SLPN 08C



SLPN 08C

Supply Specification:

- SLPN 07C – **supply No. 91073** stainless steel urinal with a flushing head; electronics; electromagnetic valve (1 pc.);
- SLPN 08C – **supply No. 91083** connecting hose, angle valve with a filter and non-return valve (1 pc.);
- SLPN 07CZ – **supply No. 91075** 4 pcs. of alkaline batteries AA type 1,5 V/2700 mAh (only for SLPN xxCB); integrated power
- SLPN 08CZ – **supply No. 91085** supply (only for SLPN xxCZ); mounting set
- SLPN 07CB – **supply No. 91074**
- SLPN 08CB – **supply No. 91084**

Recommended Accessories:

- SLZ 01Y – **supply No. 05012** external power supply 230/24V DC for operating of max. 5 pcs. of flushing units (page 118)
- SLZ 01Z – **supply No. 05011** external power supply 230/24V DC for operating of max. 9 pcs. of flushing units (page 118)
- SLZ 06 – **supply No. 05060** external power supply 230/24V DC, for operating of max. 1 pc. of flushing unit (see page 118)
- SLD 04 – **supply No. 07040** universal remote control for an adjustment of parameters (see page 115)
- SLR 02N – **supply No. 08021** mounting frame to the plasterboard for stainless steel urinals (see page 116)
- SLA 36 – **supply No. 06360** set of alkaline batteries, 4 pcs. of 1,5 V AA 2700 mAh (see page 115)