

# Ceramic Urinals with the Radar Flushing Unit SLP 19RS, SLP 23RS, SLP 31RS, SLP 49RS



## Characteristics:



LEED



SLP 19 - GOLEM



SLP 23 - CAPRINO

- **economy flushing by 1 liter of water**
- easy installation by the help of paper drill template
- system reacts only on the direct use of the urinal (it analyses changes, which are proceeded inside of the urinal, when a liquid (urine) is flowing through)
- adjustable flushing time from 0,5 to 15,5 sec.
- adjustable minimum use time (min. time of urinal direct using) from 6 to 15 sec.
- parameters adjustment by SLD 04 remote control (without the necessity to dismantle the urinal from the wall)
- automatic flushing after each 6 hours non-use
- possibility to regulate a water flow by the angle valve
- radar flushing unit recharges a water to the siphon after each flushing

## Technical Specification:

### Operating voltage

- SLP 19RB, 31RB	6V
- SLP 19RS, 23RS, 31RS, 49RS	24V DC
- SLP 19RZ, 23RZ, 31RZ, 49RZ	230V AC/50Hz

### Power input

- operating by 24V DC	10 W
- operating by 6V	1,4 W

### Recommended flow pressure

0,1 - 0,6 MPa

### Rate of flow

12 l/min. (inf. data)

### Water inlet

male thread G 1/2"

### Water outlet

inlet fitting with a sealing



SLP 31 - LIVO



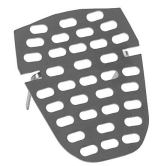
SLP 49 - CAPRINO PLUS



SLA 11



SLA 18



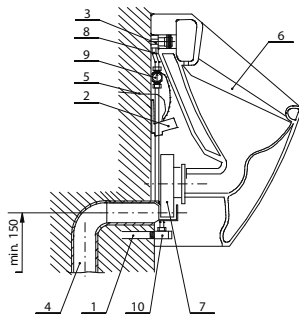
SLA 26

## Supply Specification:

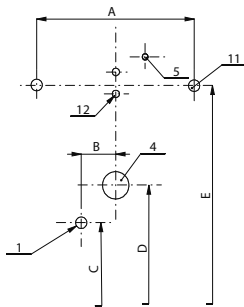
- SLP 19RS** – **supply No. 11195** ceramic urinal, mounting rail with a radar flushing unit, electromagnetic valve,  
**SLP 19RZ** – **supply No. 01195** connecting hose, angle valve with a filter, special inlet fitting with a rubber seal, siphon,  
**SLP 23RS** – **supply No. 11235** mounting set, paper drill template, integrated power supply (only for models with „Z“ index)  
**SLP 23RZ** – **supply No. 01235**  
**SLP 31RS** – **supply No. 11315**  
**SLP 31RZ** – **supply No. 01315**  
**SLP 49RS** – **supply No. 11495**  
**SLP 49RZ** – **supply No. 01495**
- SLP 19RB** – **supply No. 11197** ceramic urinal with integrated radar electronics (battery operated), electromagnetic valve,  
**SLP 31RB** – **supply No. 11317** connecting hose, angle valve with a filter, special inlet fitting with a seal, siphon, mounting set, case for batteries, 4 pcs. of alkaline batteries AA type 1,5 V/2700 mAh

## Installation Drawing:

SLP xxRS, SLP xxRZ, SPLP xxRB



- 1 - water supply
- 2 - electronics with a radar sensor
- 3 - inlet fitting with a rubber seal
- 4 - waste pipeline Ø 50 mm
- 5 - feed cable from the power supply (only for SLP xxRS)
- 6 - ceramic urinal
- 7 - siphon
- 8 - connecting hose
- 9 - electromagnetic valve
- 10 - angle valve with a filter
- 11 - 2 holes Ø 14 mm for wall plug
- 12 - 2 holes Ø 8 mm for wall plug



	A	B	C	D	E
GOLEM	240	60	215	400	660
LIVO	255	45	290	350	660
CAPRINO	240	60	215	400	660
CAPRINO PLUS	240	61	145	400	660

dimensions of urinal [mm]	width	height	depth
GOLEM	305	535	340
LIVO	360	575	327
CAPRINO	310	545	340
CAPRINO PLUS	320	645	350

SLP xxRS



SLP xxRZ



SLP xxRB



## Recommended Accessories:

- SLZ 01Y – supply No. 05012 external power supply 230/24V DC for operating of max. 5 pcs. of flushing units (see page 118)
- SLZ 01Z – supply No. 05011 external power supply 230/24V DC for operating of max. 9 pcs. of flushing units (see page 118)
- SLD 04 – supply No. 07040 remote control for an adjustment of parameters of radar flushing unit and piezo electronics (see page 115)
- SLR 01L – supply No. 08015 mounting frame to the plasterboard for the urinal with radar flushing unit on the mounting rail (see page 116)
- SLA 11 – supply No. 06110 universal plastic sieve for urinals (see page 115)
- SLA 18 – supply No. 06180 universal plastic sieve with filling for urinals (see page 115)
- SLA 26 – supply No. 06260 stainless steel sieve for urinal Golem (see page 115)